

TROUP COUNTY GOVERNMENT CENTER LIGHT FIXTURE PHASE 1

LAGRANGE, GA

BID SET

5/26/22

2WR # 22-038



11 Ninth Street
Suite 120
Columbus, GA 31901
P. (706) 571-6923
F. (706) 571-6928

INDEX TO DRAWINGS

GENERAL	ELECTRICAL	
<p>T1.1 COVER SHEET</p>	<p>EG101L GROUND FLOOR LIGHTING PLAN EG102L FIRST FLOOR LIGHTING PLAN EG103L SECOND FLOOR LIGHTING PLAN EG104L THIRD FLOOR LIGHTING PLAN</p>	
GENERAL NOTES		
<p>USE OF CONTRACT DOCUMENTS</p> <ol style="list-style-type: none"> DRAWINGS AND SPECIFICATIONS OF ALL DISCIPLINES INCLUDED HEREIN CONSTITUTE THE FULL SCOPE OF THIS PROJECT. THESE DOCUMENTS ARE INTENDED TO ESTABLISH THE FULL CONTRACTUAL OBLIGATION OF THE GENERAL CONTRACTOR TO COMPLETE THE WORK SHOWN AND SPECIFIED. IT SHALL BE THE GENERAL CONTRACTOR'S ULTIMATE RESPONSIBILITY TO COORDINATE THE PROPOSALS AND WORK OF ALL TRADES. ARCHITECTURAL AND ENGINEERING DRAWINGS ARE COMPLIMENTARY. ITEMS INDICATED ON ARCHITECTURAL DRAWINGS SHALL BE PROVIDED WHETHER OR NOT THEY ARE INDICATED ON AND/OR COORDINATED WITH CONSULTANTS' DRAWINGS. ANY CONFLICTS BETWEEN ARCHITECTURAL AND ENGINEERING WORK SHALL BE IMMEDIATELY BROUGHT TO THE ATTENTION OF THE ARCHITECT PRIOR TO PROCEEDING WITH THE WORK. CONTRACTORS SHALL COORDINATE THE SCOPE OF THEIR WORK WITH THE CONTRACT DOCUMENTS. PLANS AND SPECIFICATIONS SHALL NOT BE SEPARATED. NO CLAIMS FOR EXTRAS WILL BE CONSIDERED DUE TO SUB-CONTRACTOR NOT RELATING SCOPE OF WORK TO CONTRACT DOCUMENTS. ALL WORK IS TO BE IN STRICT COMPLIANCE WITH ALL STATE LAWS AND CODES WHICH APPLY TO THIS USE AND TO GENERALLY ACCEPTED CONSTRUCTION TRADE PRACTICES. THE ARCHITECT WAIVES ANY AND ALL RESPONSIBILITY AND LIABILITY FOR PROBLEMS WHICH ARISE FROM FAILURE TO FOLLOW THESE PLANS, SPECIFICATIONS AND THE DESIGN INTENT THEY CONVEY, OR FOR PROBLEMS WHICH ARISE FROM OTHERS' FAILURE TO OBTAIN AND/OR FOLLOW THE DESIGN PROFESSIONAL'S GUIDANCE WITH RESPECT TO ANY ERRORS, OMISSIONS, INCONSISTENCIES, AMBIGUITIES OR CONFLICTS WHICH ARE ALLEGED. SECTIONS AND DETAILS CONTAINED IN THE CONTRACT DOCUMENTS ARE TYPICAL. CONTRACTOR IS RESPONSIBLE FOR PROVIDING COMPONENTS AND/OR CONSTRUCTION NOTED OR INDICATED IN OTHER SIMILAR AREAS OF THE PROJECT IF THEY CAN BE REASONABLY INFERRED TO BE A PART OF THE ASSEMBLY BASED ON OTHER SIMILAR SECTIONS AND DETAILS CONTAINED IN THE CONTRACT DOCUMENTS. NOT ALL COMPONENTS IN EACH DETAIL MAY BE SPECIFICALLY CALLED OUT ON THAT PARTICULAR ARCHITECTURAL DETAIL. CONTRACTOR SHALL STILL BE RESPONSIBLE FOR PROVIDING THESE ITEMS IF THEY CAN BE REASONABLY INFERRED TO BE A PART OF THE ASSEMBLY BASED ON OTHER SIMILAR DETAILS CONTAINED WITHIN THE CONTRACT DOCUMENTS. DO NOT SCALE ANY DRAWINGS TO DETERMINE DIMENSIONS. RELY ONLY ON FIELD MEASUREMENT AND WRITTEN DIMENSIONS FOR NEW WORK. ALL DIMENSIONS ARE FROM FACE OF STUD OR FACE OF MASONRY (UNO). ALL DIMENSIONS AND CONDITIONS SHALL BE FIELD VERIFIED PRIOR TO PROCEEDING WITH THE WORK OF THIS CONTRACT. ANY DISCREPANCIES BETWEEN FIELD CONDITIONS AND CONTRACT DOCUMENTS SHALL IMMEDIATELY BE BROUGHT TO THE ATTENTION OF THE ARCHITECT PRIOR TO PROCEEDING WITH THE WORK. "SCALE" INDICATED ON THE ELEVATIONS MAY NOT BE REPRESENTATIVE OF A SCALED DRAWING. THE CONTRACTOR SHALL MAKE FIELD MEASUREMENTS AS REQUIRED TO ASCERTAIN THE EXTENT AND QUANTITY OF WORK TO BE PERFORMED. SUBCONTRACTORS SHALL INVESTIGATE ALL EXISTING CONDITIONS ASSOCIATED WITH THEIR SCOPE OF WORK AND VERIFY REQ'D QUANTITIES OF MATERIALS PRIOR TO PROVIDING A BID TO THE GENERAL CONTRACTOR. NO CHANGE ORDERS WILL BE GRANTED FOR ADDITIONAL WORK REQ'D WHICH IS EVIDENT FROM FIELD INVESTIGATION AND IS CONSISTENT WITH THE REQUIREMENTS OF THE CONTRACT DOCUMENTS. SUBCONTRACTORS SHALL VERIFY REQ'D QUANTITIES OF MATERIALS WITH THE GENERAL CONTRACTOR PRIOR TO PURCHASING. NO CHANGE ORDERS WILL BE GRANTED FOR ADDITIONAL QUANTITIES OR DETAIL WORK REQ'D WHICH IS EVIDENT FROM FIELD CONDITIONS AND IS CONSISTENT WITH THE REQUIREMENTS OF THE CONTRACT DOCUMENTS. ANY WORK INSTALLED IN CONFLICT WITH THE CONTRACT DOCUMENTS SHALL BE CORRECTED BY THE CONTRACTOR AT HIS EXPENSE AND AT NO ADDITIONAL EXPENSE TO THE OWNER, ARCHITECT, OR CONSULTANTS. 	<p>CONTRACTOR RESPONSIBILITY</p> <ol style="list-style-type: none"> THE CONTRACTOR SHALL PROVIDE ALL NECESSARY PERMITS AND INSPECTIONS CONTRACTOR AND SUBCONTRACTORS SHALL BE RESPONSIBLE FOR OBTAINING AND PAYING FOR ALL PERMITS AND FEES REQUIRED, NOT NORMALLY COVERED BY THE BUILDING PERMIT. THE CONTRACTOR SHALL FILE ALL NECESSARY CERTIFICATES OF INSURANCE, PAY ALL FEES, AND OBTAIN ANY AND ALL BONDS REQUIRED BY ANY AGENCY IN ORDER TO DO THE WORK HEREIN DESCRIBED. THE CONTRACTOR SHALL VERIFY THE LOCATION OF ALL EXISTING UTILITIES BELOW GRADE AND RELATED SERVICE CONNECTIONS WITH THE RESPECTIVE UTILITY COMPANIES. THE CONTRACTOR SHALL REMOVE FROM THE SITE AND DISPOSE OF ALL TRASH, DEBRIS AND CONSTRUCTION MATERIALS DUE TO CONSTRUCTION OR DEMOLITION PRIOR TO COMPLETION OF THE WORK. THE CONTRACTOR SHALL LEAVE THE SITE IN A CONDITION EQUAL TO OR BETTER THAN IT WAS BEFORE COMMENCEMENT OF WORK ON THIS CONTRACT. THE CONTRACTOR SHALL ALSO ENSURE THAT TRASH AND DEBRIS ARE NOT BLOWN OR SPREAD ON OR OFF SITE DURING PERFORMANCE OF THE WORK. THE CONTRACTOR SHALL RESTRICT ACCESS TO THE ROOF TO ONLY THOSE FORCES NEEDING ACCESS TO THE ROOF IN ORDER TO COMPLETE THEIR WORK. FINISHED ROOF SURFACES ARE TO BE PROTECTED AT ALL TIMES. THE CONTRACTOR SHALL LIMIT HIS WORK AND FORCES UNDER HIS CONTROL TO ONLY THOSE AREAS OF WORK AS DEFINED BY THE CONTRACT DOCUMENTS. THE CONTRACTOR SHALL PROVIDE CRAFTSMAN-LIKE INSTALLATION AND FINISH OF ALL EXPOSED CONSTRUCTION SYSTEMS. PAINT ALL EXPOSED SCHEDULED PIPING, CONDUIT AND MECHANICAL EQUIPMENT IN AREAS NOTED TO BE PAINTED. THE CONTRACTOR SHALL REPAIR AT HIS EXPENSE DAMAGE TO ANY FINISHES TO REMAIN WHICH ARE INCURRED DURING WORK ON THIS CONTRACT. THE CONTRACTOR SHALL PROVIDE ADEQUATE WEATHER PROTECTION FOR THE BUILDING AND ITS CONTENTS DURING THE COURSE OF THE WORK. ALL OPENINGS IN ANY WALL OR ROOF SHALL BE PROTECTED FROM ALL FORMS OF WEATHER OR WATER. 	
<p>ARCHITECT SCOTT ALLEN 2WR + PARTNERS 11 NINTH STREET, SUITE 120 COLUMBUS, GA 31901 P: (706) 571-6923 F: (706) 571-6928 E: 2WRARCH.COM</p>	<p>OWNER REPRESENTATIVE JAMES (JAY) ANDERSON TROUP COUNTY BOARD OF COMMISSIONERS 100 RIDLEY AVENUE LAGRANGE, GA 30240 P: (706) 298-3792 F: N/A E: WWW.TROUPCOUNTYGA.ORG</p>	

TROUP COUNTY GOVERNMENT CENTER LIGHT FIXTURE PHASE 1

LAGRANGE, GA



BID SET

Project Number: 22-038
Date: 5/26/2022
Drawn By: VH
Checked By: GH
Revisions:

No.	Date	Description

Sheet Description

COVER SHEET

Sheet Number

T1.1

**TROUP COUNTY
GOVERNMENT
CENTER LIGHT
FIXTURE
PHASE 1**

LAGRANGE, GA



BID SET

Project Number: 22-038
Date: 5/26/2022
Drawn By: VH
Checked By: GH
Revisions:

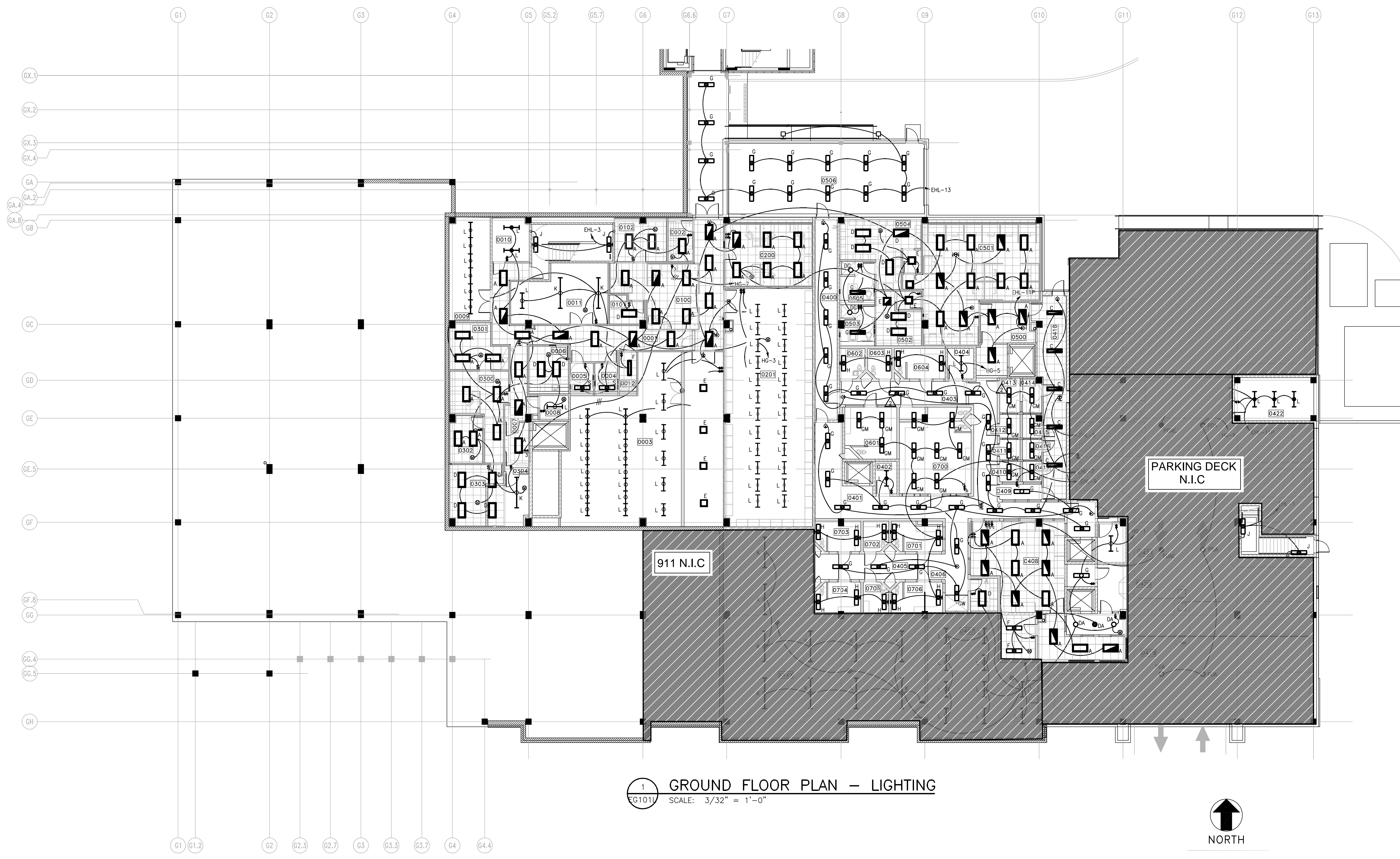
No.	Date	Description

Sheet Description

GROUND FLOOR LIGHTING PLAN

Sheet Number

EG101L



1 GROUND FLOOR PLAN - LIGHTING
EG101L SCALE: 3/32" = 1'-0"



TYPE	EXISTING FIXTURES	NEW LED LIGHT FIXTURE CATALOG NO.	NEW LED LIGHT FIXTURE MANUFACTURER.	TYPE	EXISTING FIXTURES	TYPE	EXISTING FIXTURES	
A	TO BE USED IN PUBLIC AREAS; RECESSED 2-LAMP 2'X4' FLUORESCENT FIXTURE WITH 12 CELL AND PARABOLIC LOUVERS	1.) STAKS 2X4 AL06 SWW7 2.) 2ESL4 40L MVOLT EZ1 LP835 (ALTERNATE)	1.) LITHONIA STACK LED CENTER ELEMENT LAY-IN/ LITHONIA LIGHTING 2.) 2ESL4 2X4 PREMIUM HIGH PERFORMANCE LED LIGHTING/ LITHONIA LIGHTING	TO BE BID	L	CEILING HUNG 2-LAMP FLUORESCENT 4' LONG FIXTURE IN CORRIDOR TYP. 1'X4'	DF	SEMI-RECESSED COMPACT FLUORESCENT CEILING MOUNTED WALL WASHER IN COUNCIL CHAMBERS
B	TO BE USED IN PUBLIC AREAS; RECESSED 2-LAMP 2'X2' FLUORESCENT FIXTURE WITH 6 CELL AND PARABOLIC LOUVERS	1.) STAKS 2X2 4000LM 800CRI 35K COL MINIO KT MVOLT 2.) 2ESL2 40L MVOLT EZ1 LP835 (ALTERNATE)	1.) LITHONIA STACK LED CENTER ELEMENT LAY-IN/ LITHONIA LIGHTING 2.) 2ESL2 2X2 PREMIUM HIGH PERFORMANCE LED LIGHTING/ LITHONIA LIGHTING	TO BE BID	M	6'X8L RECESSED I-LAMP FLUORESCENT FLOOR FIXTURE	DG	RECESSED 1'X2' LAMP COMPACT FLUORESCENT MEDIUM SECURITY SHOWER LIGHT
C	TO BE USED IN PUBLIC AREAS; RECESSED 2-LAMP 1'X4' FLUORESCENT FIXTURE W/ 6" CELL AND PARABOLIC LOUVERS	1.) STAKS 1X4 AL06 SWW7 2.) 2ESL4 40L MVOLT EZ1 LP835 (ALTERNATE)	1.) LITHONIA STACK LED CENTER ELEMENT LAY-IN/ LITHONIA LIGHTING 2.) 2ESL4 1'X4' PREMIUM HIGH PERFORMANCE LED LIGHTING/ LITHONIA LIGHTING	TO BE BID	N	SURFACE MOUNTED 2-LAMP FLUORESCENT STAGGERED STRIP; FIXTURE MOUNTED ON FIRST FLOOR ELEVATOR LOBBY ABOVE GLASS PANEL	PA	CHANDELIER FIXTURE WITH FLUORESCENT LAMPING IN COURTROOMS AND JUDGES CHAMBER
D	TO BE USED IN NON PUBLIC AREAS; RECESSED 2'X4' FLUORESCENT FIXTURE WITH DIFFUSER	CPANL 2X4 AL06 SWW7 M2	LITHONIA CPANL LED LUMEN SWITCHABLE PANEL/ LITHONIA LIGHTING	TO BE BID	P	SEMI-RECESSED 2-LAMP 2'X2' FLUORESCENT DIRECT/INDIRECT FIXTURE IN COUNCIL CHAMBERS	PB	STEM MOUNTED PENDANT WITH COMPACT FLUORESCENT LAMPING
E	TO BE USED IN NON PUBLIC AREAS; RECESSED 2'X2' FLUORESCENT FIXTURE WITH DIFFUSER	CPANL 2X2 AL01 SWW7 M4	LITHONIA CPANL LED LUMEN SWITCHABLE PANEL/ LITHONIA LIGHTING	TO BE BID	R	RECESSED I-LAMP LINEAR FLUORESCENT; TYP. 1'X4' WALL WASHER IN RESTROOMS, COURT, AND JUDGE'S DESK	SA	WALL MOUNTED 30" HIGH, 6" WIDE SCONCE WITH FLUORESCENT LAMPING IN COUNCIL CHAMBER
F	TO BE USED IN NON PUBLIC AREAS; RECESSED 1'X4' FLUORESCENT FIXTURE WITH DIFFUSER	CPANL 1X4 AL01 SWW7 M4	LITHONIA CPANL LED LUMEN SWITCHABLE PANEL/ LITHONIA LIGHTING	TO BE BID	S	TYP. WALL MOUNTED LIGHT 25.25" HIGH, 6" WIDE FLUORESCENT OVER SINK AND INDIVIDUAL TOILETS	XC	CEILING MOUNTED EDGE-LIT EXIT SIGN
G	SURFACE MOUNTED 2-LAMP FLUORESCENT MED. SECURITY 1'X4' FIXTURE				T	PENDANT MOUNTED FLUORESCENT DIRECT/INDIRECT FIXTURE; 4L IN CONFERENCE ROOM		
GM	SURFACE MOUNTED 2-LAMP FLUORESCENT TYP. SECURITY 1'X4' FIXTURE IN CELLS AND COURT HOLDING CELLS				DA	RECESSED 6" SQUARE COMPACT FLUORESCENT TYP. DOWN LIGHT 6" SQUARE		
GW	SURFACE MOUNTED 2-LAMP FLUORESCENT SECURITY TYP. 1'X4' FIXTURE IN CORRIDOR				DB	RECESSED COMPACT FLUORESCENT 6" ROUND DOWN LIGHT		
H	CORNER MOUNTED 2-LAMP FLUORESCENT MAXIMUM SECURITY FIXTURE IN CELL WALL				DC	RECESSED COMPACT FLUORESCENT 4" ROUND DOWN LIGHT IN COURT ENTRY, COURT ROOM, AND CONFERENCE ROOM		
J	WALL MOUNTED 2-LAMP FLUORESCENT MED-SECURITY LIGHT ON ALL STAIR LANDINGS TYP. 1'X4'				DD	RECESSED HALOGEN TYP. 3" DOWN LIGHT IN FIRST FLOOR ELEVATOR		
K	CEILING HUNG 2-LAMP FLUORESCENT FIXTURE MOUNT LIGHT 8L TYP. 1'X4'				DE	RECESSED COMPACT FLUORESCENT 6" WALL WASHER IN JUDGE'S CHAMBER		

**TROUP COUNTY
GOVERNMENT
CENTER LIGHT
FIXTURE
PHASE 1**

LAGRANGE, GA



BID SET

Project Number: 22-038
Date: 5/26/2022
Drawn By: VH
Checked By: GH
Revisions:

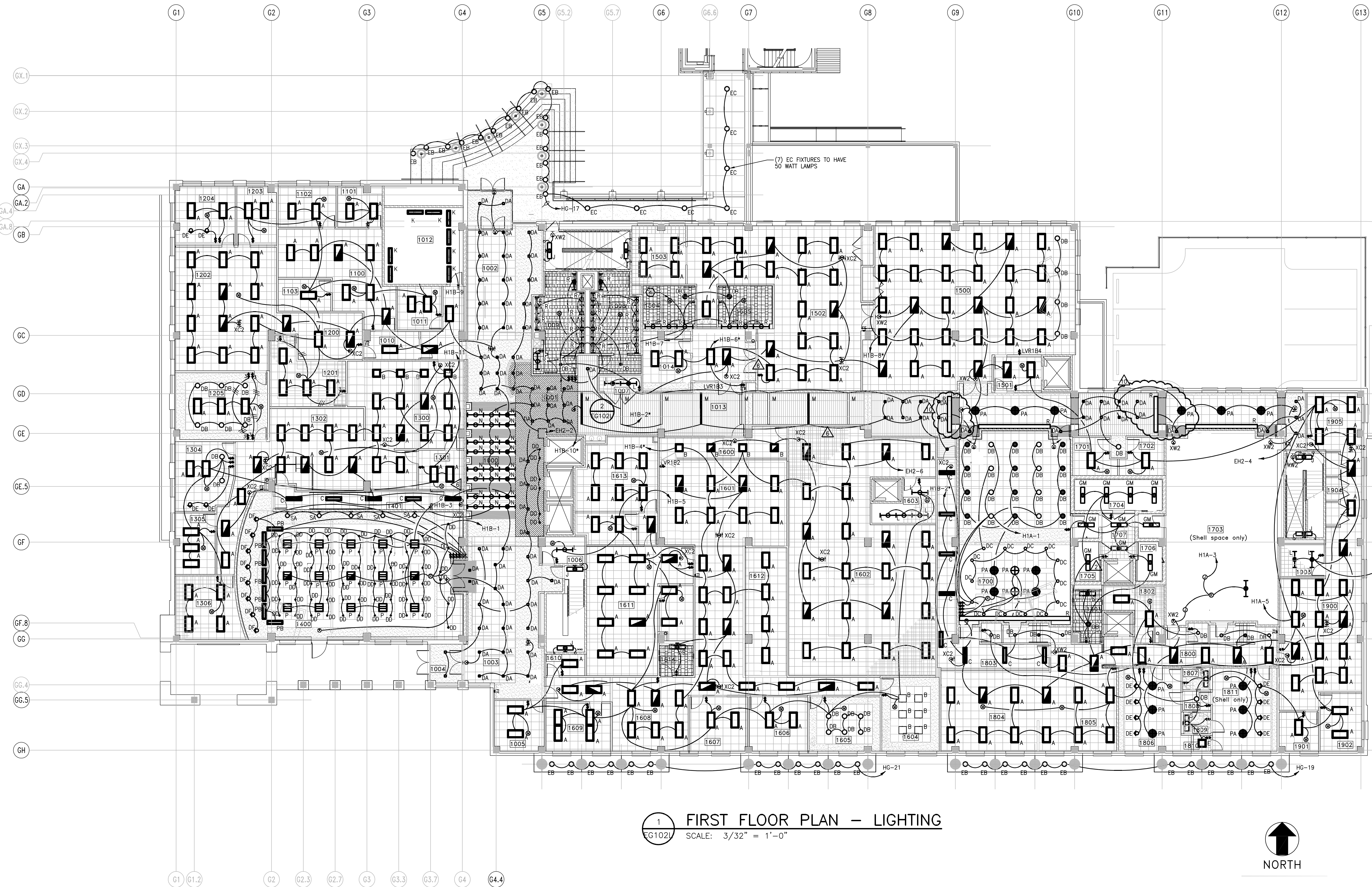
No.	Date	Description
-----	------	-------------

Sheet Description

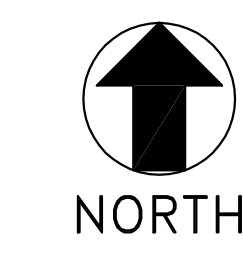
**FIRST FLOOR
LIGHTING
PLAN**

Sheet Number

EG102L



1 FIRST FLOOR PLAN - LIGHTING
EG102L SCALE: 3/32" = 1'-0"



TYPE	EXISTING FIXTURES	NEW LED LIGHT FIXTURE CATALOG NO.	NEW LED LIGHT FIXTURE MANUFACTURER:	TYPE	EXISTING FIXTURES	TYPE	EXISTING FIXTURES	
A	TO BE USED IN PUBLIC AREAS; RECESSED 2-LAMP 2'X4' FLUORESCENT FIXTURE WITH 12 CELL AND PARABOLIC LOUVERS	1) STAKS 2X4 AL06 SWW7 2) 2ESL4 40L MVOLT E21 LP835 (ALTERNATE)	1) LITHONIA STACK LED CENTER ELEMENT LAY-IN/ LITHONIA LIGHTING 2) 2ESL4 2X4 PREMIUM HIGH PERFORMANCE LED LIGHTING/ LITHONIA LIGHTING	TO BE BID	L	CEILING HUNG 2-LAMP FLUORESCENT 4' LONG FIXTURE IN CORRIDOR TYP. 1'X4'	DF	SEMI-RECESSED COMPACT FLUORESCENT CEILING MOUNTED WALL WASHER IN COUNCIL CHAMBERS
B	TO BE USED IN PUBLIC AREAS; RECESSED 2-LAMP 2'X2' FLUORESCENT FIXTURE WITH 6 CELL AND PARABOLIC LOUVERS	1) STAKS 2X2 4000LM 800CRI 35K COL MINIO KT MVOLT 2) 2ESL2 40L MVOLT E21 LP835 (ALTERNATE)	1) LITHONIA STACK LED CENTER ELEMENT LAY-IN/ LITHONIA LIGHTING 2) 2ESL2 2'X2' PREMIUM HIGH PERFORMANCE LED LIGHTING/ LITHONIA LIGHTING	TO BE BID	M	6'X8L RECESSED 1-LAMP FLUORESCENT FLOOR FIXTURE	DG	RECESSED 1'X2' LAMP COMPACT FLUORESCENT MEDIUM SECURITY SHOWER LIGHT
C	TO BE USED IN PUBLIC AREAS; RECESSED 2-LAMP 1'X4' FLUORESCENT FIXTURE W/ 6" CELL AND PARABOLIC LOUVERS	1) STAKS 1'X4 AL06 SWW7 2) 2ESL4 40L MVOLT E21 LP835 (ALTERNATE)	1) LITHONIA STACK LED CENTER ELEMENT LAY-IN/ LITHONIA LIGHTING 2) 2ESL4 1'X4' PREMIUM HIGH PERFORMANCE LED LIGHTING/ LITHONIA LIGHTING	TO BE BID	N	SURFACE MOUNTED 2-LAMP FLUORESCENT STAGGERED STRIP; FIXTURE MOUNTED ON FIRST FLOOR ELEVATOR LOBBY ABOVE GLASS PANEL	PA	CHANDELIER FIXTURE WITH FLUORESCENT LAMPING IN COURTROOMS AND JUDGES CHAMBER
D	TO BE USED IN NON PUBLIC AREAS; RECESSED 2'X4' FLUORESCENT FIXTURE WITH DIFFUSER	CPANL 2X4 AL06 SWW7 M2	LITHONIA CPANL LED LUMEN SWITCHABLE PANEL/ LITHONIA LIGHTING	TO BE BID	P	SEMI-RECESSED 2-LAMP 2'X2' FLUORESCENT DIRECT/INDIRECT FIXTURE IN COUNCIL CHAMBERS	PB	STEM MOUNTED PENDANT WITH COMPACT FLUORESCENT LAMPING
E	TO BE USED IN NON PUBLIC AREAS; RECESSED 2'X2' FLUORESCENT FIXTURE WITH DIFFUSER	CPANL 2X2 AL01 SWW7 M4	LITHONIA CPANL LED LUMEN SWITCHABLE PANEL/ LITHONIA LIGHTING	TO BE BID	R	RECESSED 1-LAMP LINEAR FLUORESCENT; TYP. 1'X4' WALL WASHER IN RESTROOMS, COURT, AND JUDGES DESK	SA	WALL MOUNTED 30" HIGH, 6" WIDE SCONCE WITH FLUORESCENT LAMPING IN COUNCIL CHAMBER
F	TO BE USED IN NON PUBLIC AREAS; RECESSED 1'X4' FLUORESCENT FIXTURE WITH DIFFUSER	CPANL 1'X4 AL01 SWW7 M4	LITHONIA CPANL LED LUMEN SWITCHABLE PANEL/ LITHONIA LIGHTING	TO BE BID	S	TYP. WALL MOUNTED LIGHT 25.25" HIGH, 6" WIDE FLUORESCENT OVER SINK AND INDIVIDUAL TOILETS	XC	CEILING MOUNTED EDGE-LIT EXIT SIGN
G	SURFACE MOUNTED 2-LAMP FLUORESCENT MED. SECURITY 1'X4' FIXTURE				T	PENDANT MOUNTED FLUORESCENT DIRECT/INDIRECT FIXTURE; 4L IN CONFERENCE ROOM		
GM	SURFACE MOUNTED 2-LAMP FLUORESCENT TYP. SECURITY 1'X4' FIXTURE IN CELLS AND COURT HOLDING CELLS				DA	RECESSED 6" SQUARE COMPACT FLUORESCENT TYP. DOWN LIGHT 6" SQUARE		
GW	SURFACE MOUNTED 2-LAMP FLUORESCENT SECURITY TYP. 1'X4' FIXTURE IN CORRIDOR				DB	RECESSED COMPACT FLUORESCENT 6" ROUND DOWN LIGHT		
H	CORNER MOUNTED 2-LAMP FLUORESCENT MAXIMUM SECURITY FIXTURE IN CELL WALL				DC	RECESSED COMPACT FLUORESCENT 4" ROUND DOWN LIGHT IN COURT ENTRY, COURT ROOM, AND CONFERENCE ROOM		
J	WALL MOUNTED 2-LAMP FLUORESCENT MED-SECURITY LIGHT ON ALL STAIR LANDINGS TYP. 1'X4'				DD	RECESSED HALOGEN TYP. 3" DOWN LIGHT IN FIRST FLOOR ELEVATOR		
K	CEILING HUNG 2-LAMP FLUORESCENT FIXTURE MOUNT LIGHT 8L TYP. 1'X4'				DE	RECESSED COMPACT FLUORESCENT 6" WALL WASHER IN JUDGES CHAMBER		

**TROUP COUNTY
GOVERNMENT
CENTER LIGHT
FIXTURE
PHASE 1**

LAGRANGE, GA



BID SET

Project Number: 22-038
Date: 5/26/2022
Drawn By: VH
Checked By: GH
Revisions:

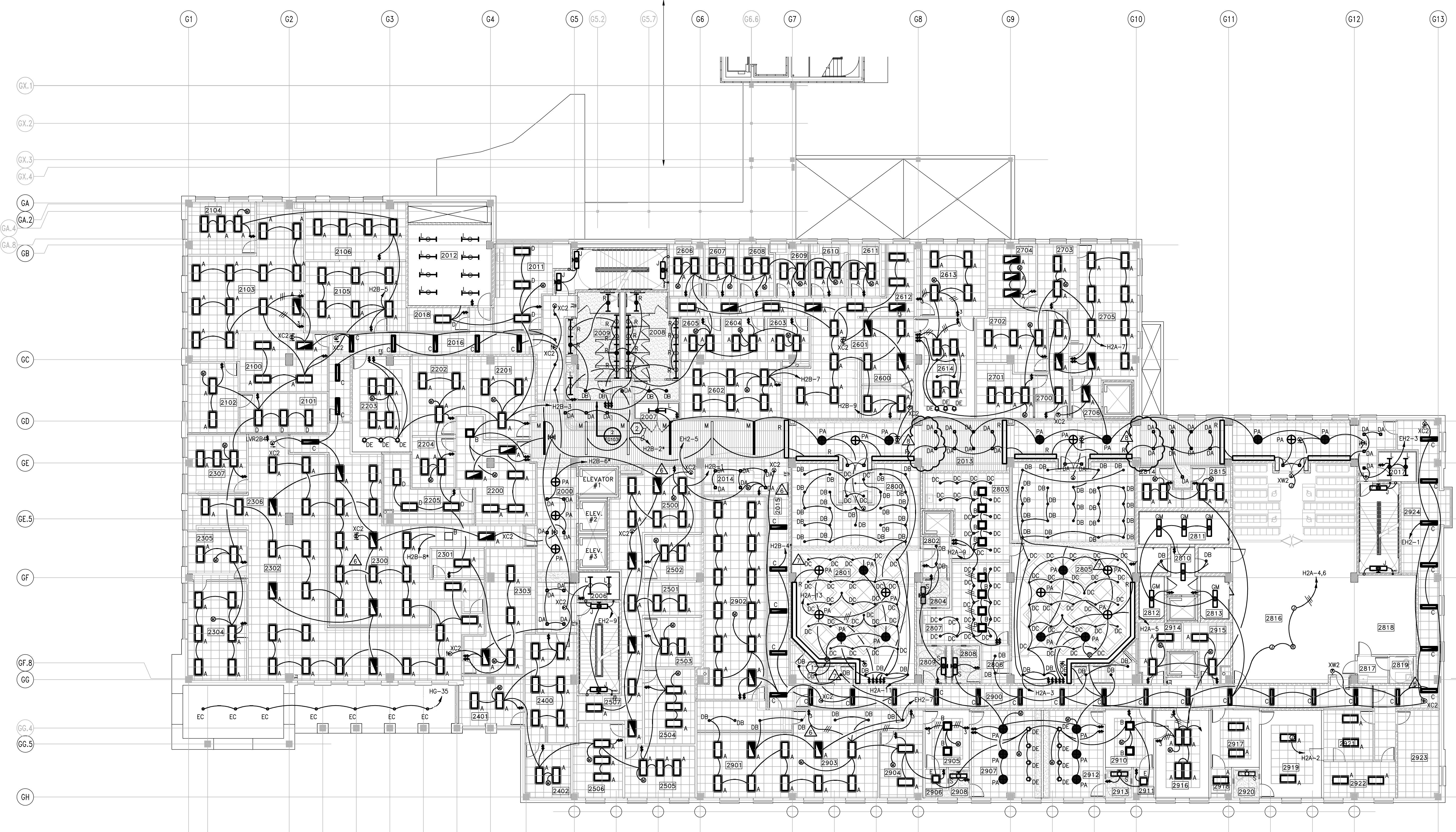
No.	Date	Description

Sheet Description

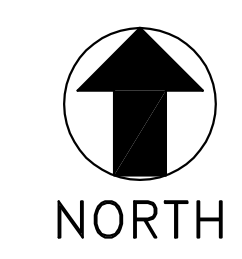
**SECOND
FLOOR
LIGHTING
PLAN**

Sheet Number

EG103L



1 SECOND FLOOR PLAN - LIGHTING
EG103L SCALE: 3/32" = 1'-0"



TYPE	EXISTING FIXTURES	NEW LED LIGHT FIXTURE CATALOG NO.	NEW LED LIGHT FIXTURE MANUFACTURER:	TYPE	EXISTING FIXTURES	TYPE	EXISTING FIXTURES	
A	TO BE USED IN PUBLIC AREAS; RECESSED 2-LAMP 2'X4' FLUORESCENT FIXTURE WITH 12 CELL AND PARABOLIC LOUVERS	1) STAKS 2X4 AL06 SWW7 2) 2ESL4 40L MVOLT E21 LP835 (ALTERNATE)	1) LITHONIA STACK LED CENTER ELEMENT LAY-IN/ LITHONIA LIGHTING 2) 2ESL4 2'X4' PREMIUM HIGH PERFORMANCE LED LIGHTING/ LITHONIA LIGHTING	TO BE BID	L	CEILING HUNG 2-LAMP FLUORESCENT 4' LONG FIXTURE IN CORRIDOR TYP. 1'X4'	DF	SEMI-RECESSED COMPACT FLUORESCENT CEILING MOUNTED WALL WASHER IN COUNCIL CHAMBERS
B	TO BE USED IN PUBLIC AREAS; RECESSED 2-LAMP 2'X2' FLUORESCENT FIXTURE WITH 6 CELL AND PARABOLIC LOUVERS	1) STAKS 2X2 4000LM 800CRI 35K COL MINIO KT MVOLT 2) 2ESL2 40L MVOLT E21 LP835 (ALTERNATE)	1) LITHONIA STACK LED CENTER ELEMENT LAY-IN/ LITHONIA LIGHTING 2) 2ESL2 2'X2' PREMIUM HIGH PERFORMANCE LED LIGHTING/ LITHONIA LIGHTING	TO BE BID	M	6'X8L RECESSED I-LAMP FLUORESCENT FLOOR FIXTURE	DG	RECESSED 1'X2' LAMP COMPACT FLUORESCENT MEDIUM SECURITY SHOWER LIGHT
C	TO BE USED IN PUBLIC AREAS; RECESSED 2-LAMP 1'X4' FLUORESCENT FIXTURE W/ 6" CELL AND PARABOLIC LOUVERS	1) STAKS 1'X4 AL06 SWW7 2) 2ESL4 40L MVOLT E21 LP835 (ALTERNATE)	1) LITHONIA STACK LED CENTER ELEMENT LAY-IN/ LITHONIA LIGHTING 2) 2ESL4 1'X4' PREMIUM HIGH PERFORMANCE LED LIGHTING/ LITHONIA LIGHTING	TO BE BID	N	SURFACE MOUNTED 2-LAMP FLUORESCENT STAGGERED STRIP; FIXTURE MOUNTED ON FIRST FLOOR ELEVATOR LOBBY ABOVE GLASS PANEL	PA	CHANDELIER FIXTURE WITH FLUORESCENT LAMPING IN COURTROOMS AND JUDGES CHAMBER
D	TO BE USED IN NON PUBLIC AREAS; RECESSED 2'X4' FLUORESCENT FIXTURE WITH DIFFUSER	CPANEL 2X4 AL06 SWW7 M2	LITHONIA CPANEL LED LUMEN SWITCHABLE PANEL/ LITHONIA LIGHTING	TO BE BID	P	SEMI-RECESSED 2-LAMP 2'X2' FLUORESCENT DIRECT/INDIRECT FIXTURE IN COUNCIL CHAMBERS	PB	STEM MOUNTED PENDANT WITH COMPACT FLUORESCENT LAMPING
E	TO BE USED IN NON PUBLIC AREAS; RECESSED 2'X2' FLUORESCENT FIXTURE WITH DIFFUSER	CPANEL 2X2 AL01 SWW7 M4	LITHONIA CPANEL LED LUMEN SWITCHABLE PANEL/ LITHONIA LIGHTING	TO BE BID	R	RECESSED I-LAMP LINEAR FLUORESCENT; TYP. 1'X4' WALL WASHER IN RESTROOMS, COURT, AND JUDGE'S DESK	SA	WALL MOUNTED 30" HIGH, 6" WIDE SCONCE WITH FLUORESCENT LAMPING IN COUNCIL CHAMBER
F	TO BE USED IN NON PUBLIC AREAS; RECESSED 1'X4' FLUORESCENT FIXTURE WITH DIFFUSER	CPANEL 1'X4 AL01 SWW7 M4	LITHONIA CPANEL LED LUMEN SWITCHABLE PANEL/ LITHONIA LIGHTING	TO BE BID	S	TYP. WALL MOUNTED LIGHT 25.25" HIGH, 6" WIDE FLUORESCENT OVER SINK AND INDIVIDUAL TOILETS	XC	CEILING MOUNTED EDGE-LIT EXIT SIGN
G	SURFACE MOUNTED 2-LAMP FLUORESCENT MED. SECURITY 1'X4' FIXTURE				T	PENDANT MOUNTED FLUORESCENT DIRECT/INDIRECT FIXTURE; 4L IN CONFERENCE ROOM		
GM	SURFACE MOUNTED 2-LAMP FLUORESCENT TYP. SECURITY 1'X4' FIXTURE IN CELLS AND COURT HOLDING CELLS				DA	RECESSED 6" SQUARE COMPACT FLUORESCENT TYP. DOWN LIGHT 6" SQUARE		
GW	SURFACE MOUNTED 2-LAMP FLUORESCENT SECURITY TYP. 1'X4' FIXTURE IN CORRIDOR				DB	RECESSED COMPACT FLUORESCENT 6" ROUND DOWN LIGHT		
H	CORNER MOUNTED 2-LAMP FLUORESCENT MAXIMUM SECURITY FIXTURE IN CELL WALL				DC	RECESSED COMPACT FLUORESCENT 4" ROUND DOWN LIGHT IN COURT ENTRY, COURT ROOM, AND CONFERENCE ROOM		
J	WALL MOUNTED 2-LAMP FLUORESCENT MED-SECURITY LIGHT ON ALL STAIR LANDINGS TYP. 1'X4'				DD	RECESSED HALOGEN TYP. 3" DOWN LIGHT IN FIRST FLOOR ELEVATOR		
K	CEILING HUNG 2-LAMP FLUORESCENT FIXTURE MOUNT LIGHT 8L, TYP. 1'X4'				DE	RECESSED COMPACT FLUORESCENT 6" WALL WASHER IN JUDGE'S CHAMBER		

**TROUP COUNTY
GOVERNMENT
CENTER LIGHT
FIXTURE
PHASE 1**

LAGRANGE, GA



BID SET

Project Number: 22-038
Date: 5/26/2022
Drawn By: VH
Checked By: GH
Revisions:

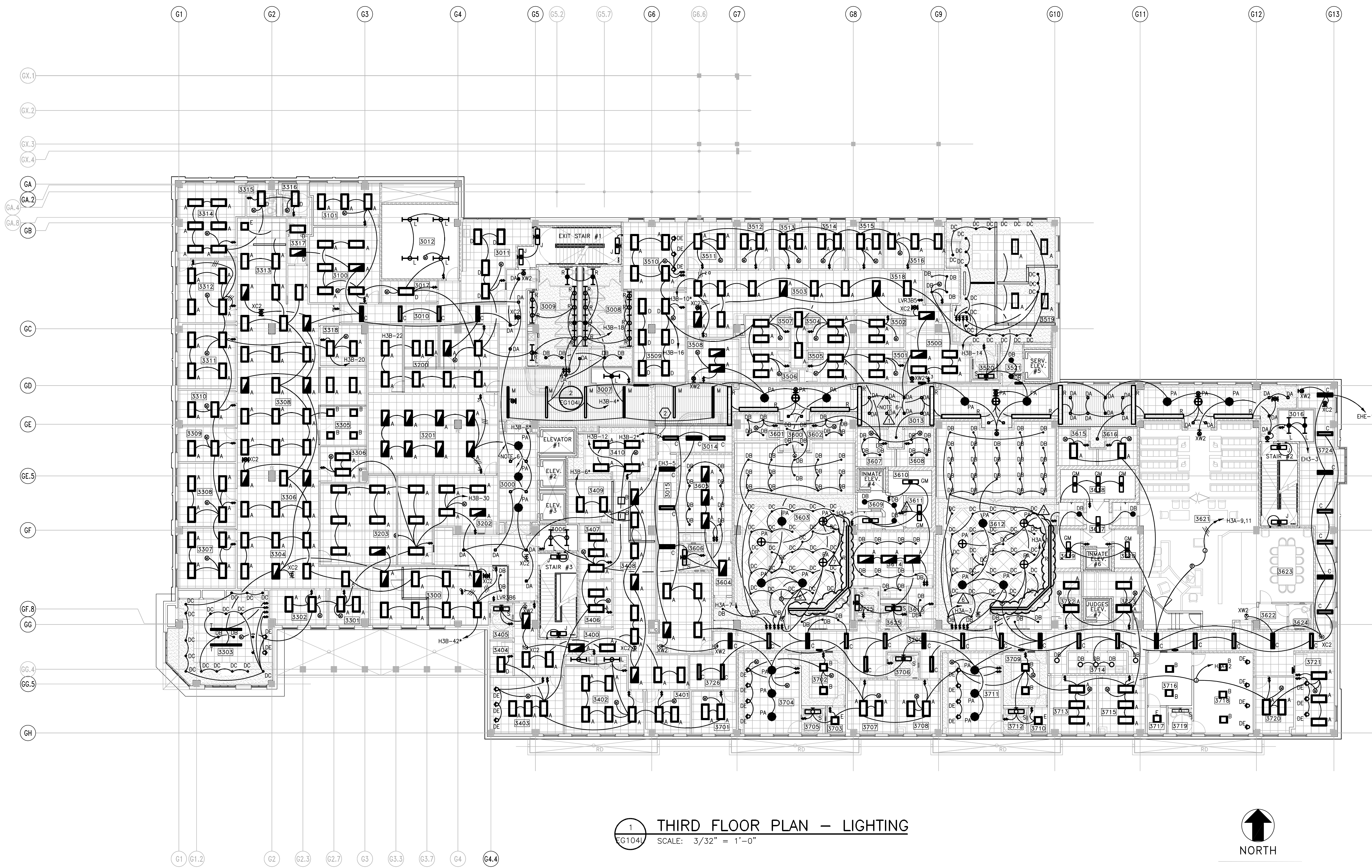
No.	Date	Description

Sheet Description

**THIRD FLOOR
LIGHTING
PLAN**

Sheet Number

EG104L



1 THIRD FLOOR PLAN - LIGHTING
EG104L SCALE: 3/32" = 1'-0"

TYPE	EXISTING FIXTURES	NEW LED LIGHT FIXTURE CATALOG NO.	NEW LED LIGHT FIXTURE MANUFACTURER:	TYPE	EXISTING FIXTURES	TYPE	EXISTING FIXTURES	
A	TO BE USED IN PUBLIC AREAS; RECESSED 2-LAMP 2'X4' FLUORESCENT FIXTURE WITH 12 CELL AND PARABOLIC LOUVERS	1) STAKS 2X4 AL06 SWW7 2) 2ESL4 40L MVOLT E2I LP835 (ALTERNATE)	1) LITHONIA STACK LED CENTER ELEMENT LAY-IN/ LITHONIA LIGHTING 2) 2ESL4 2'X4' PREMIUM HIGH PERFORMANCE LED LIGHTING/ LITHONIA LIGHTING	TO BE BID	L	CEILING HUNG 2-LAMP FLUORESCENT 4' LONG FIXTURE IN CORRIDOR TYP. 1'X4'	DF	SEMI-RECESSED COMPACT FLUORESCENT CEILING MOUNTED WALL WASHER IN COUNCIL CHAMBERS
B	TO BE USED IN PUBLIC AREAS; RECESSED 2-LAMP 2'X2' FLUORESCENT FIXTURE WITH 6 CELL AND PARABOLIC LOUVERS	1) STAKS 2X2 4000LM 800CRI 35K COL MINIO KT MVOLT 2) 2ESL2 40L MVOLT E2I LP835 (ALTERNATE)	1) LITHONIA STACK LED CENTER ELEMENT LAY-IN/ LITHONIA LIGHTING 2) 2ESLE 2'X2' PREMIUM HIGH PERFORMANCE LED LIGHTING/ LITHONIA LIGHTING	TO BE BID	M	6'X8L RECESSED I-LAMP FLUORESCENT FLOOR FIXTURE	DG	RECESSED 1'X2' LAMP COMPACT FLUORESCENT MEDIUM SECURITY SHOWER LIGHT
C	TO BE USED IN PUBLIC AREAS; RECESSED 2-LAMP 1'X4' FLUORESCENT FIXTURE W/ 6' CELL AND PARABOLIC LOUVERS	1) STAKS 1'X4 AL06 SWW7 2) 2ESL4 40L MVOLT E2I LP835 (ALTERNATE)	1) LITHONIA STACK LED CENTER ELEMENT LAY-IN/ LITHONIA LIGHTING 2) 2ESL4 1'X4' PREMIUM HIGH PERFORMANCE LED LIGHTING/ LITHONIA LIGHTING	TO BE BID	N	SURFACE MOUNTED 2-LAMP FLUORESCENT STAGGERED STRIP; FIXTURE MOUNTED ON FIRST FLOOR ELEVATOR LOBBY ABOVE GLASS PANEL	PA	CHANDELIER FIXTURE WITH FLUORESCENT LAMPING IN COURTROOMS AND JUDGES CHAMBER
D	TO BE USED IN NON PUBLIC AREAS; RECESSED 2'X4' FLUORESCENT FIXTURE WITH DIFFUSER	CPANL 2X4 AL06 SWW7 M2	LITHONIA CPANL LED LUMEN SWITCHABLE PANEL/ LITHONIA LIGHTING	TO BE BID	P	SEMI-RECESSED 2-LAMP 2'X2' FLUORESCENT DIRECT/INDIRECT FIXTURE IN COUNCIL CHAMBERS	PB	STEM MOUNTED PENDANT WITH COMPACT FLUORESCENT LAMPING
E	TO BE USED IN NON PUBLIC AREAS; RECESSED 2'X2' FLUORESCENT FIXTURE WITH DIFFUSER	CPANL 2X2 AL01 SWW7 M4	LITHONIA CPANL LED LUMEN SWITCHABLE PANEL/ LITHONIA LIGHTING	TO BE BID	R	RECESSED I-LAMP LINEAR FLUORESCENT; TYP. 1'X4' WALL WASHER IN RESTROOMS, COURT, AND JUDGES DESK	SA	WALL MOUNTED 30" HIGH, 6" WIDE SCONCE WITH FLUORESCENT LAMPING IN COUNCIL CHAMBER
F	TO BE USED IN NON PUBLIC AREAS; RECESSED 1'X4' FLUORESCENT FIXTURE WITH DIFFUSER	CPANL 1'X4 AL01 SWW7 M4	LITHONIA CPANL LED LUMEN SWITCHABLE PANEL/ LITHONIA LIGHTING	TO BE BID	S	TYP. WALL MOUNTED LIGHT 25.25" HIGH, 6" WIDE FLUORESCENT OVER SINK AND INDIVIDUAL TOILETS	XC	CEILING MOUNTED EDGE-LIT EXIT SIGN
G	SURFACE MOUNTED 2-LAMP FLUORESCENT MED. SECURITY 1'X4' FIXTURE				T	PENDANT MOUNTED FLUORESCENT DIRECT/INDIRECT FIXTURE; 4L IN CONFERENCE ROOM		
GM	SURFACE MOUNTED 2-LAMP FLUORESCENT TYP. SECURITY 1'X4' FIXTURE IN CELLS AND COURT HOLDING CELLS				DA	RECESSED 6" SQUARE COMPACT FLUORESCENT TYP. DOWN LIGHT 6" SQUARE		
GW	SURFACE MOUNTED 2-LAMP FLUORESCENT SECURITY TYP. 1'X4' FIXTURE IN CORRIDOR				DB	RECESSED COMPACT FLUORESCENT 6" ROUND DOWN LIGHT		
H	CORNER MOUNTED 2-LAMP FLUORESCENT MAXIMUM SECURITY FIXTURE IN CELL WALL				DC	RECESSED COMPACT FLUORESCENT 4" ROUND DOWN LIGHT IN COURT ENTRY, COURT ROOM, AND CONFERENCE ROOM		
J	WALL MOUNTED 2-LAMP FLUORESCENT MED-SECURITY LIGHT ON ALL STAIR LANDINGS TYP. 1'X4'				DD	RECESSED HALOGEN TYP. 3" DOWN LIGHT IN FIRST FLOOR ELEVATOR		
K	CEILING HUNG 2-LAMP FLUORESCENT FIXTURE MOUNT LIGHT 8L TYP. 1'X4'				DE	RECESSED COMPACT FLUORESCENT 6" WALL WASHER IN JUDGE'S CHAMBER		