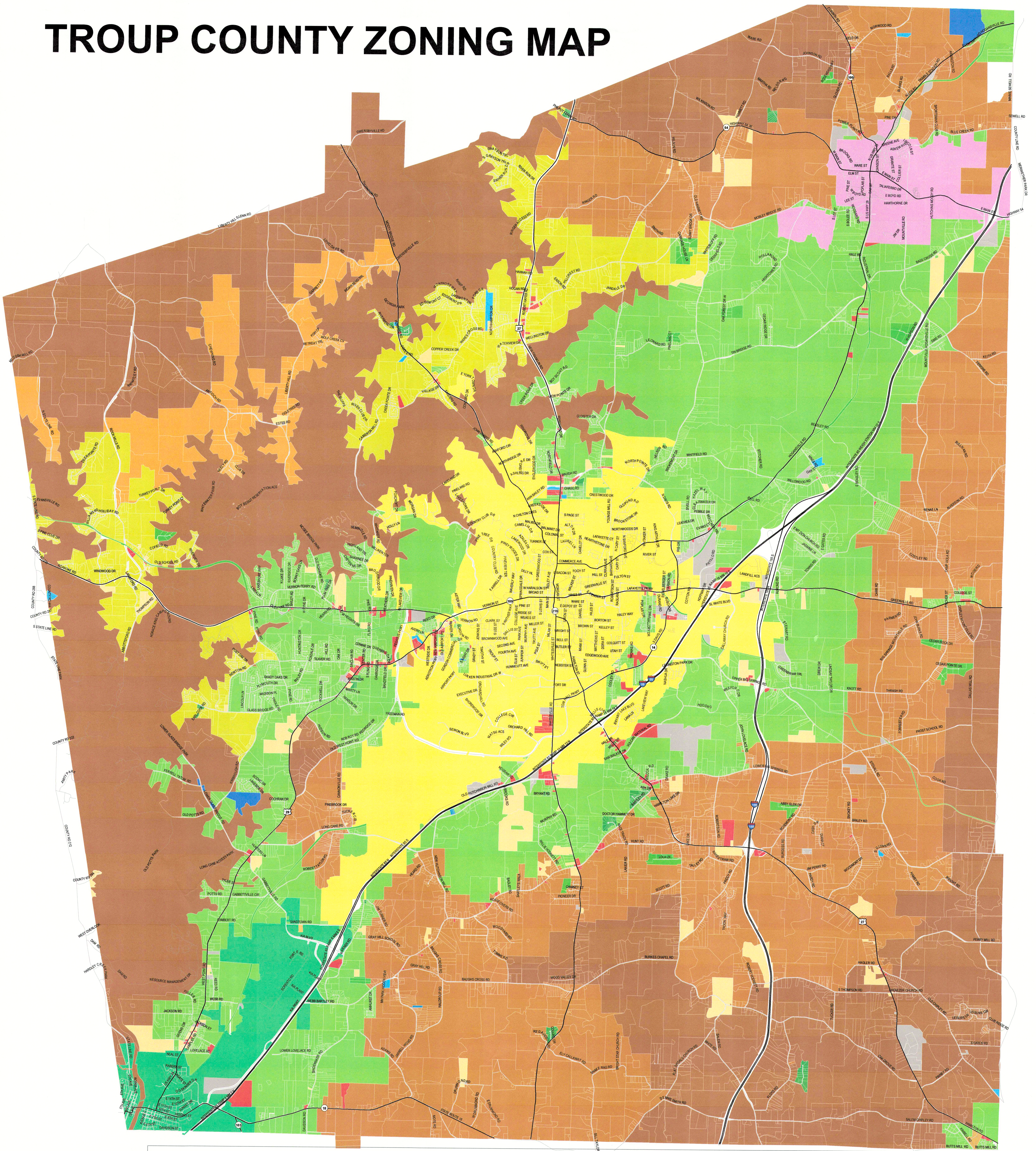


# TROUP COUNTY ZONING MAP



WEST POINT  
 HOGANSVILLE  
 CITY OF LAGRANGE

- |   |  |
|---|--|
| <span style="display: inline-block; width: 15px; height: 10px; background-color: #8b4513; border: 1px solid black;"></span> 01-AG   | <span style="display: inline-block; width: 15px; height: 10px; background-color: #0070c0; border: 1px solid black;"></span> 01-MFR   |
| <span style="display: inline-block; width: 15px; height: 10px; background-color: #c08040; border: 1px solid black;"></span> 01-AGR  | <span style="display: inline-block; width: 15px; height: 10px; background-color: #00b0f0; border: 1px solid black;"></span> 01-MHP   |
| <span style="display: inline-block; width: 15px; height: 10px; background-color: #e0c060; border: 1px solid black;"></span> 01-CRVP | <span style="display: inline-block; width: 15px; height: 10px; background-color: #ffc000; border: 1px solid black;"></span> 01-NHC   |
| <span style="display: inline-block; width: 15px; height: 10px; background-color: #ff0000; border: 1px solid black;"></span> 01-GC   | <span style="display: inline-block; width: 15px; height: 10px; background-color: #0000ff; border: 1px solid black;"></span> 01-PUD   |
| <span style="display: inline-block; width: 15px; height: 10px; background-color: #a0a0a0; border: 1px solid black;"></span> 01-GI   | <span style="display: inline-block; width: 15px; height: 10px; background-color: #008000; border: 1px solid black;"></span> 01-RR    |
| <span style="display: inline-block; width: 15px; height: 10px; background-color: #e0e0e0; border: 1px solid black;"></span> 01-LC   | <span style="display: inline-block; width: 15px; height: 10px; background-color: #008080; border: 1px solid black;"></span> 01-SFMD  |
| <span style="display: inline-block; width: 15px; height: 10px; background-color: #ffff00; border: 1px solid black;"></span> 01-LR   | <span style="display: inline-block; width: 15px; height: 10px; background-color: #ffff00; border: 1px solid black;"></span> 01-SPLIT |
| <span style="display: inline-block; width: 15px; height: 10px; background-color: #ffa500; border: 1px solid black;"></span> 01-LRR  | <span style="display: inline-block; width: 15px; height: 10px; background-color: #008000; border: 1px solid black;"></span> 01-USD   |

"This is to certify that this Official Zoning Map supersedes and replaces the Official Zoning Map of Troup County, dated April 7, 2008."

Date: 9/21/21

Chairman, Board of Commissioners: *Patrick Cunniff*

County Clerk: *Valerie West*

